

Category 6 Data Products



Pressac Communications Limited
Glaisdale Drive West
Bilborough
Nottingham
NG8 4GY

Tel: +44 (0) 115 936 5200
Fax: +44 (0) 115 936 5252
E-mail: sales@presscomm.co.uk

The Pressac web page holds comprehensive information on our company, services and products and can be reached on www.presscomm.co.uk



Category 6 Data Products



Pressac Communications Limited
Glaisdale Drive West
Bilborough
Nottingham
NG8 4GY

Tel: +44 (0) 115 936 5200
Fax: +44 (0) 115 936 5252
E-mail: sales@presscomm.co.uk

The Pressac web page holds comprehensive information on our company, services and products and can be reached on www.presscomm.co.uk



overview

Category 6/Zeta 6 Overview

Trust Pressac to make your data connection

Choose Pressac's complete service for voice and data products, and your company couldn't be better connected. Based in Nottingham, England, Pressac is a market leader and established supplier of high quality products to the telecommunications market world wide.

Our designers and engineers work closely with customers to transform concepts for innovative new products in to finished items. This design capability is backed by the latest state of the art CAD technology and the many years experience of our design team. Our skilled engineering function enables us to turn designs in to successful finished products using cost effective materials which meet stringent international standards.

Moreover, our extensive manufacturing facilities including automated technology and flexible production systems allow us to satisfy the rigorous delivery demands of today's world markets.

It is this one stop service, total product capability and the backing of the Pressac Group world wide that sets us apart from our competitors and means we can offer our customers a complete service.

The Zeta 6 Structured Cabling System

The Zeta 6 structured cabling system from Pressac is a UK manufactured, fully modular, 100 ohm UTP system, offering full compliance with Category 6 standards. With unique styling, innovative installation features and exceptional performance, Zeta 6 is the only option for genuine Category 6 performance at a cost effective price.

Zeta 6 – A True Category 6 Solution

- Zeta 6 provides positive powersum ACR at 200 MHz
- Zeta 6 has been independently tested to provide Category 6 / Class E performance
- Zeta 6 is backwards compatible with Category 5E solutions
- Zeta 6 patch cords are compliant with TIA de-embedded requirements



Frequently asked questions about Category 6

What is Category 6?

Category 6 is a specification for network cabling systems to support current and emerging high speed protocols. It utilises the same physical RJ45 interface of previous generic cabling systems but offers positive powersum ACR at 200 MHz with individual components verified to 250 MHz.

Is Category 6 compatible with Category 5E?

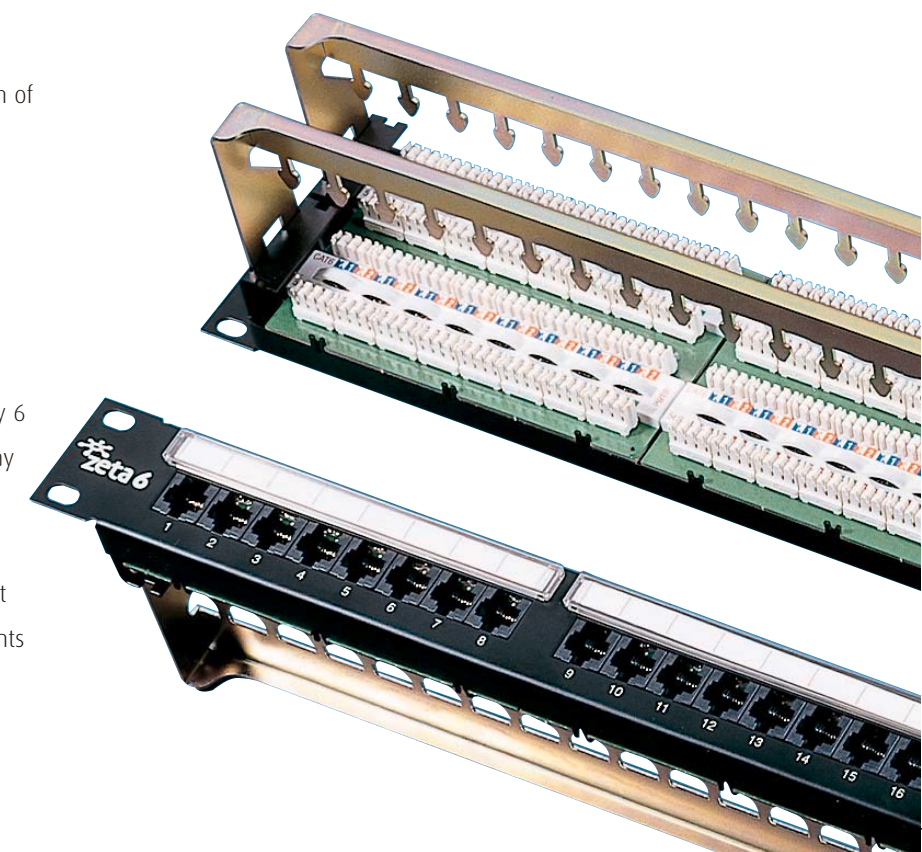
It is a requirement of Category 6 that it must offer backwards compatibility with hardware from a lower specified category. Expected performance from hardware mixed categories should result in performance no worse than the lowest category component i.e. performance of network utilising Category 6 connectivity and Category 5E cable must provide Category 5E performance.

What are the benefits of Category 6 over Category 5E?

Category 6 cabling systems offer over twice the bandwidth of Category 5E cabling systems. Higher specified NEXT values mean that Category 6 offers over 2^{1/2} times better signal isolation than Category 5E systems presently installed.

Why should I install Category 6?

The increased bandwidth and signal isolation that Category 6 solutions provide makes it an ideal platform for present day protocols such as gigabit ethernet as well as future high speed protocols offering speeds over 1 Gbit/s. Installing a high performance cable infrastructure now is the most cost effective way to cater for your network cabling requirements now and for the future.



For more information or to order telephone Pressac on +44 (0) 115 936 5200

overview

Category 6/Zeta 6 Overview

Trust Pressac to make your data connection

Choose Pressac's complete service for voice and data products, and your company couldn't be better connected. Based in Nottingham, England, Pressac is a market leader and established supplier of high quality products to the telecommunications market world wide.

Our designers and engineers work closely with customers to transform concepts for innovative new products in to finished items. This design capability is backed by the latest state of the art CAD technology and the many years experience of our design team. Our skilled engineering function enables us to turn designs in to successful finished products using cost effective materials which meet stringent international standards.

Moreover, our extensive manufacturing facilities including automated technology and flexible production systems allow us to satisfy the rigorous delivery demands of today's world markets.

It is this one stop service, total product capability and the backing of the Pressac Group world wide that sets us apart from our competitors and means we can offer our customers a complete service.

The Zeta 6 Structured Cabling System

The Zeta 6 structured cabling system from Pressac is a UK manufactured, fully modular, 100 ohm UTP system, offering full compliance with Category 6 standards. With unique styling, innovative installation features and exceptional performance, Zeta 6 is the only option for genuine Category 6 performance at a cost effective price.

Zeta 6 – A True Category 6 Solution

- Zeta 6 provides positive powersum ACR at 200 MHz
- Zeta 6 has been independently tested to provide Category 6 / Class E performance
- Zeta 6 is backwards compatible with Category 5E solutions
- Zeta 6 patch cords are compliant with TIA de-embedded requirements



Frequently asked questions about Category 6

What is Category 6?

Category 6 is a specification for network cabling systems to support current and emerging high speed protocols. It utilises the same physical RJ45 interface of previous generic cabling systems but offers positive powersum ACR at 200 MHz with individual components verified to 250 MHz.

Is Category 6 compatible with Category 5E?

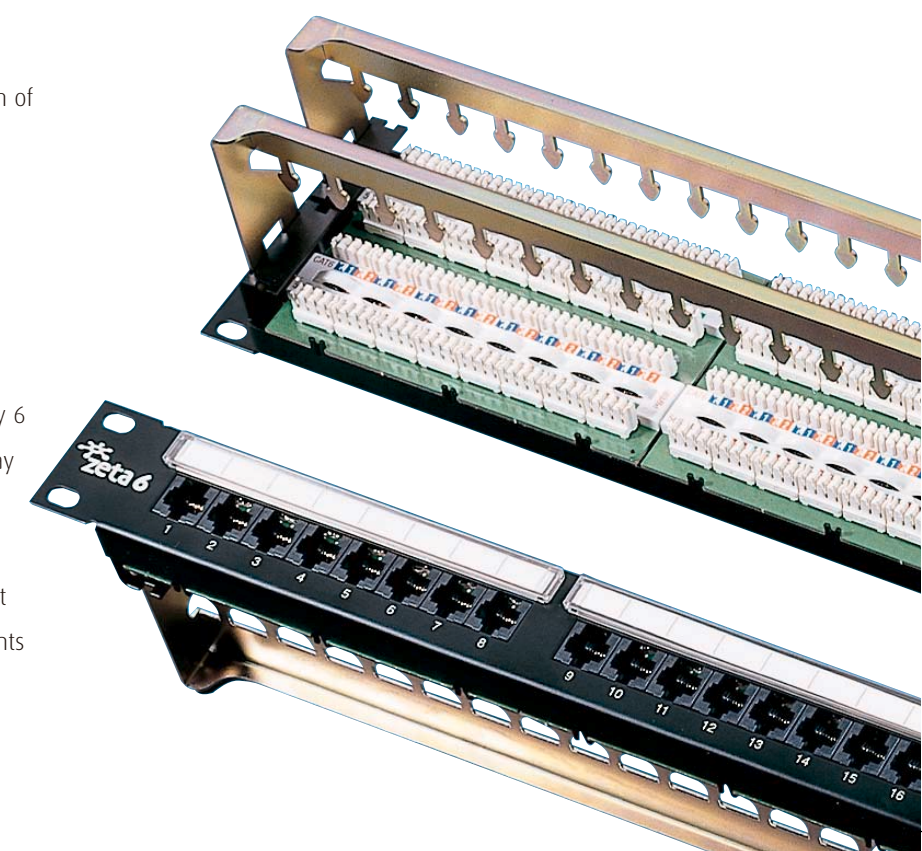
It is a requirement of Category 6 that it must offer backwards compatibility with hardware from a lower specified category. Expected performance from hardware mixed categories should result in performance no worse than the lowest category component i.e. performance of network utilising Category 6 connectivity and Category 5E cable must provide Category 5E performance.

What are the benefits of Category 6 over Category 5E?

Category 6 cabling systems offer over twice the bandwidth of Category 5E cabling systems. Higher specified NEXT values mean that Category 6 offers over 2^{1/2} times better signal isolation than Category 5E systems presently installed.

Why should I install Category 6?

The increased bandwidth and signal isolation that Category 6 solutions provide makes it an ideal platform for present day protocols such as gigabit ethernet as well as future high speed protocols offering speeds over 1 Gbit/s. Installing a high performance cable infrastructure now is the most cost effective way to cater for your network cabling requirements now and for the future.



For more information or to order telephone Pressac on +44 (0) 115 936 5200

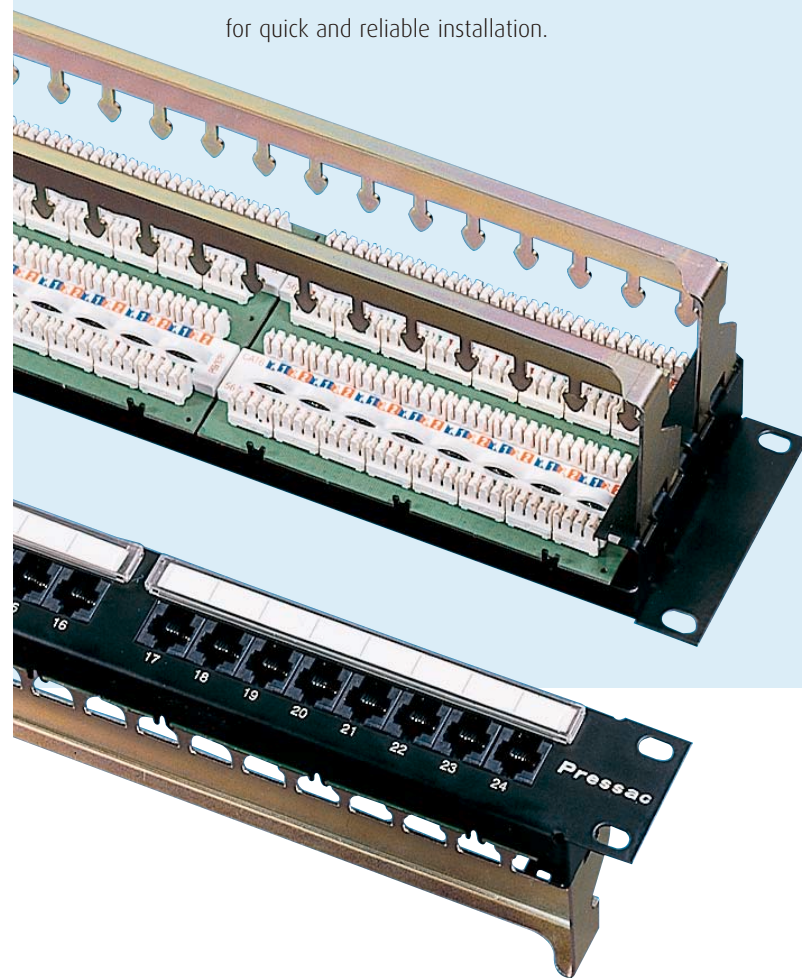
Zeta 6 Patch Panels and Management Bars

Patch Panels

Zeta 6 patch panels are available in industry standard sizes and are rich with installer friendly features. Low and high density versions are available with comprehensive labelling features. Zeta 6 patch panels are ideally suited for quick and reliable installation.

- Manufactured in powder coated mild steel
- IDCs are compatible with either a LSA or 110 punch down tool
- Features 'arrow' style cable tie point for rear cable entry
- Individual and bulk tie points for side cable entry
- Fitted with individual 568B (258A) colour coded label for easy wiring
- Flip down front clear lens provides easy port labelling and identification
- Independently verified to Category 6 standards
- Supplied with captive nuts and cable ties for convenient installation

Description	Part No.	Dimensions
UTP 16 way patch panel	46.10016	1U
UTP 24 way patch panel	46.10024	1U
UTP 32 way patch panel	46.10032	2U
UTP 48 way patch panel	46.10048	2U

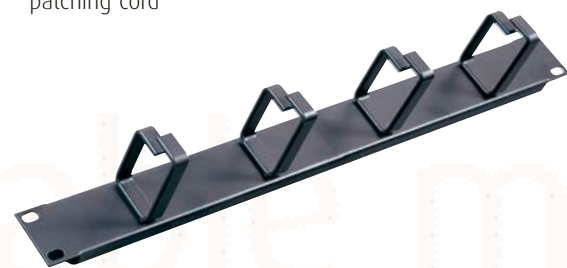


Cable Management Bars

Zeta 6 cable management bars provide convenient cable management rings for tidy dressing and routing of patching cord

- Available in 1U and 2U variants
- Manufactured in powder coated mild steel

Description	Part No.
1U Management bar	46.00011
2U Management bar	46.00012



Zeta 6 – Guaranteed Performance

When choosing a Category 6 solution, end users should be confident that the performance of their cabling system not only meets but exceeds the requirements of the Category 6 specification.

When comparing the technical specifications of systems, users should satisfy themselves that both the individual connecting hardware and system performance is Category 6 compliant and preferably has been independently verified by a third party.

Zeta 6 offers:

- Class E / Category 6 Permanent Link performance independently verified by Delta
- Class E / Category 6 Channel (4 connector model) performance independently verified by Delta
- Individual connecting hardware compliant with Category 6 standards
- Patchcords are manufactured using plugs which are compliant with the 36dB to 38dB de embedded requirements of TIA specifications

Zeta 6 System Testing

In support of the 20 year system warranty, field testing of the permanent link and channel performance is made simple.

Zeta 6 field testing is

- Compatible with major manufacturers standard test equipment
- Does not require proprietary test adapter cords for permanent link testing
- Utilises standard off the shelf link and channel adapters



patch panels

guaranteed performance

cable management

Zeta 6 Eurostyle Bevelled Face Plates & Back Boxes

Eurostyle Bevelled Face Plates

Zeta 6 Eurostyle bevelled face plates are designed to accept the full range of Zeta 6 and Press Link Eurostyle modules. With an increased depth of mounting, they effectively reduce the profile of an installed module by 8 mm, beneficial where modules are mounted in trunking and the amount of space available for installed cable is tight.

- Manufactured in high gloss V0-ABS material
- Available with double or quadruple apertures
- Supplied with M3.5 fixing screws for convenient installation

Description	Part No.	Dimensions
Double Bevelled Face Plate	46.00074	86 x 86 x 18
Quadruple Bevelled Face Plate	46.00075	86 x 147 x 18



Back Boxes

The Zeta 6 range of 32 mm deep back boxes are surface mountable and accept the full range of Zeta 6 and Press Link face plates. Zeta 6 back boxes are suitable for applications where an extra amount of space is required in the back box to accommodate cables and satisfy the minimum bend radius requirements of cabling installations.

- Manufactured in high gloss V0-ABS material
- Back boxes are available in either single gang (for single and double face plates) or double gang (for quadruple face plates)
- Surface mounting with M3.5 screw bushes for convenient installation

Description	Part No.	Dimensions
Single gang 32 mm deep	46.00065	86 x 86 x 32
Double gang 32 mm deep	46.00066	86 x 147 x 32



For more information or to order telephone Pressac on +44 (0) 115 936 5200

Zeta 6 Patch Cords and Cable

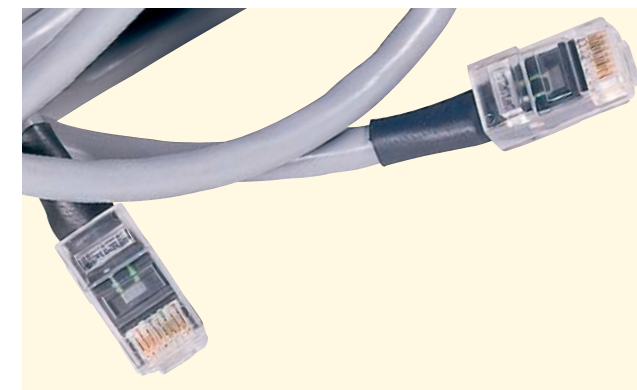
Patch Cords

Zeta 6 stranded patch cords are available in five different lengths with five colour keyed cord grips to assist identification. Using stranded cable with a cross talk reducing spline, they are fitted with high performance Category 6 plugs which offer consistent de-embedded loss within the 36dB to 38dB range as required by TIA standards.

- Available in 5 different lengths
- Choice of colour cord grips includes grey, red, green, yellow and blue
- Packaged individually
- Independently verified to Category 6 standards

Description	Part No.
UTP 0.5m stranded patch cord	46.10205.XX
UTP 1m stranded patch cord	46.10210.XX
UTP 2m stranded patch cord	46.10220.XX
UTP 3m stranded patch cord	46.10230.XX
UTP 5m stranded patch cord	46.10250.XX

Substitute the XX's with either red-red, green-green, blue-blue, yell-yellow and grey-grey



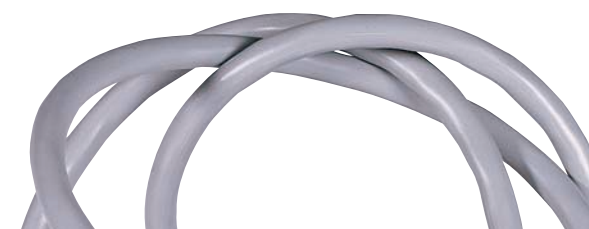
cable

Cable

Zeta 6 solid UTP cable is constructed with a cross talk reducing spline for improved pair separation.

- 6.4mm overall diameter
- Packaged in 305 metre boxed reels
- 100 ohm impedance
- PVC or LSOH outer sheath

Description	Part No.
305 m Category 6 UTP cable (PVC sheath)	46.10041
305 m Category 6 UTP cable (LSOH sheath)	46.10042



Zeta 6 Warranty & Installer Training

Zeta 6 Warranty

Pressac Communications have designed and manufactured quality telecommunications connectivity equipment for over 20 years. To ensure our customers meet their customers future needs, we offer the following guarantees for Pressac Zeta 6 structured cabling systems.

Zeta 6 20 Year Product Warranty

The Zeta 6 20 Year Product Warranty guarantees all connectivity and cable products supplied under the Zeta 6 brand and used in a Pressac Zeta 6 structured cabling system. Pressac Communications guarantee to repair or replace any product which is shown to be defective in material or workmanship for a 20 year period from the date of installation, provided it has been installed by a competent installer in accordance with industry standards.

Zeta 6 20 Year System Warranty

The Zeta 6 20 Year System Warranty warrants that a Pressac Zeta 6 structured cabling system, when installed by a Zeta 6 Registered Installer in accordance with the ratified industry standards, will support any ratified networking protocol specified for use over Category 6 / Class E cabling. In the event of a failure in the system which can be identified as a functional defect in any of the Zeta 6 components or cable, Pressac Communications will guarantee to either fund the replacement or repair the defective part(s) of the system at no cost to the customer. This warranty is in addition to the normal Zeta 6 20 year product warranty

Zeta 6 Training

Zeta 6 Registered Installer Program

In support of the Zeta 6 structured cabling system, Pressac Communications offers a full training course for enabling installers to gain Zeta 6 Registered Installer status. Training is carried out by experienced Pressac personnel and features the following;

- A training day for new installers wishing to gain Zeta 6 Registered Installer status, enabling them to offer a 20 year system warranty with any Zeta 6 system installed by them in accordance with the terms and conditions
- A half day update course for installers already holding Registered Installer status
- Flexibility, with courses held at either Pressac premises or local to the installers (dependent on number of attendees)



For more information or to order telephone Pressac on +44 (0) 115 936 5200

training

innovative



www.zeta6.co.uk

- Backwards compatible with Category 5 and 5E systems
- 4 connector channel performance independently verified by Delta to Category 6 standards
- Patch cords utilise plugs that are compliant with TIA proposed 36dB to 38dB de-embedded requirements
- 16, 24, 32 and 48 way patch panels
- Eurostyle and 6C module offering with full range of complementary face plates
- 20 year Zeta 6 Product Warranty and 20 year Zeta 6 System Warranty available (subject to terms and conditions)
- Zeta 6 registered installer program

new

stylish

Zeta 6 6C Modules, Face Plates and Blanking Plates

6C Modules

Zeta 6 6C modules are primarily designed for installation in to metal floor boxes, and are also compatible with the full range of Zeta 6 and Press Link face plates. Uniquely styled with oval label lens and oval latch guide, they are easy to install and offer increased styling over more traditional outlets.



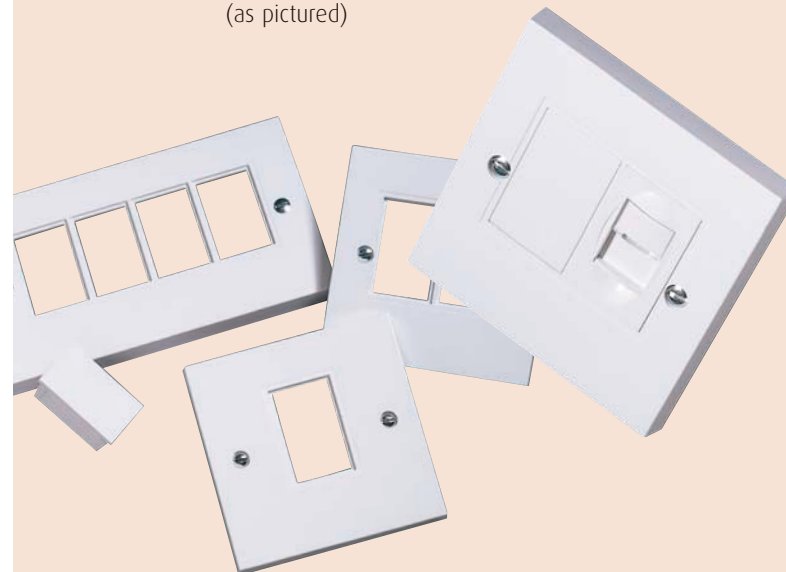
- Manufactured in high gloss V0-ABS material
- IDC connections are compatible with LSA or 110 punch down tools
- Side cable entry with 'wraparound' cable restraint providing strain relief
- Individual 568B (258A) colour coded wiring label fitted for easy wiring
- Removable oval clear lens for easy port labelling and identification
- Independently verified to Category 6 standards

Description	Part No.	Dimensions
Zeta 6 6C RJ45 Module	46.10066	37 x 23 x 35

6C

6C Face Plates and Blanking Plates

6C face plates and blanking plates are compatible with the full range of Zeta 6 and Press Link 6C modules. (as pictured)



- Manufactured in high gloss V0-ABS material
- 6C face plates are available with single, double or quadruple apertures
- Face plates are supplied with M3.5 fixing screws for convenient installation
- Blanking plates are available to fit the 6C face plate apertures

Description	Part No.	Dimensions
Single Face Plates	46.00061	85 x 85 (1 aperture 22 x 37)
Double Face Plates	46.00062	85 x 85 (2 apertures 22 x 37)
Quadruple Face Plates	46.00063	85 x 147 (4 apertures 22 x 37)
Blanking Plates	46.00064	38.5 x 25

For more information or to order telephone Pressac on +44 (0) 115 936 5200

Zeta 6 Eurostyle Modules, Face Plates & Blanking Plates

Eurostyle Modules

Zeta 6 Eurostyle modules are compatible with the full range of Zeta 6 and Press Link Eurostyle face plates. Uniquely styled with oval label lens and oval latch guide, they are easy to install and offer increased styling over more traditional outlets.



- Manufactured in high gloss V0-ABS material
- IDC connections are compatible with either LSA or 110 punch down tool
- Side cable entry with 'wraparound' cable restraint for strain relief
- Individual 568B (258A) colour coded wiring label fitted for easy wiring
- Removable oval clear lens for easy port labelling and identification
- Independently verified to Category 6 standards

Description	Part No.	Dimensions
Zeta 6 Eurostyle RJ45 Module	46.10079	50 x 25 x 35

eurostyle

Eurostyle Face Plates and Blanking Plates

Eurostyle face plates and blanking plates are compatible with the full range of Zeta 6 and Press Link Eurostyle modules.



- Manufactured in high gloss V0-ABS material
- Available with single, double or quadruple apertures
- Face plates are supplied with M3.5 fixing screws for convenient installation
- Blanking plates are available in half, single or double options

Description	Part No.	Dimensions
Single Face Plates	46.00071	85 x 85 (aperture 25 x 50)
Double Face Plates	46.00072	85 x 85 (aperture 50 x 50)
Quadruple Face Plates	46.00073	85 x 147 (aperture 100 x 50)
Half Blank	46.00076	50 x 12.5
Single Blank	46.00077	50 x 25
Double Blank	46.00078	50 x 50