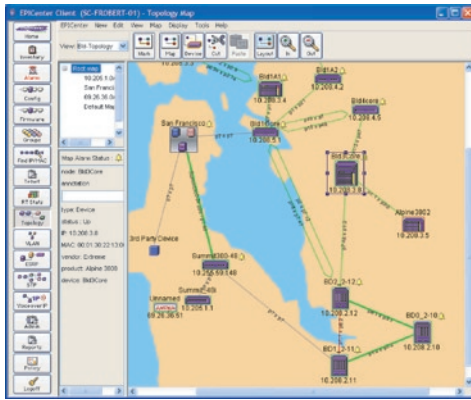


EPICenter® Network Management Software



EPICenter® management suite is a scalable full-featured network management tool that simplifies configuring, troubleshooting, and status monitoring of IP-based networks.

Operational Simplicity

- Topology view with alarm integration
- Dynamic reporting and comprehensive network summary reports
- Firmware and configuration management
- Telnet macros for easier and quicker configuration across multiple devices concurrently

Voice-Class Availability

- Intelligent alarm systems
- Real-time statistics
- Protocol monitoring (STP, ESRP)

Comprehensive Security

- Granular policy management
- SNMPv3, SSH-2 and HTTPS protocol support
- IP/MAC address finder

Service Extensibility

- Wireless discovery and management
- Voice integration with Avaya platform and management systems
- Policy Manager and Quality of Service (QoS) policies
- Link Layer Discovery Protocol (LLDP)— protocol support

EPICenter delivers the basic requirements of network management while adding valuable and intuitive features that help save time by streamlining common tasks.

EPICenter management suite from Extreme Networks® is a scalable full-featured network management tool that simplifies configuration, troubleshooting, and status monitoring of IP-based networks. Offering a comprehensive set of network management applications providing the ability to configure, monitor, troubleshoot, and manage the network and its elements, EPICenter delivers on both the basic requirements of network management while adding valuable and intuitive features that help save time by streamlining common tasks.

Network Management Challenges

What can you determine about your network at a glance? What's up and what's down, and how is everything configured? The answers to these questions are essential to delivering the applications and performance that users demand. To compound the problem, today's networks are subject to:

- Proliferation of new converged and mission-critical applications
- Constantly changing service offerings
- Unpredictable and rapidly growing network traffic
- Pressing requirements for simplicity and expediency in network deployment
- Security issues that threaten network integrity and network management access



EPICenter Features

EPICenter version 5.1 is a future-proof management platform capable of establishing and maintaining networks that are undergoing rapid change due to convergence. EPICenter establishes a new benchmark for accommodating convergence applications by offering intuitive user interfaces and by reducing the complexity of managing converged networking environments. EPICenter offers an open architecture, to accommodate a multi-vendor, service-rich environment that enables voice-class availability, and the enforcement of robust security policies.

Operational Simplicity

EPICenter's topology view provides users with every element of the network and how it is all connected in Layer 2 and Layer 3. Configuration management adds another operational simplicity. Configuration management archives and reloads device configuration and performs configuration diffs or baselining for auditing purposes. Firmware management obtains firmware version and availability information, performs multi-step upgrades, at once or scheduled, for single or multiple devices.

EPICenter's stacking capability simply manages a stack of devices as a single device and manages all ports on all devices using a single IP address.

Dynamic HTML Reporting provides easily accessible web-based reports. Unified Syslog and SNMP Alarm Manager provide a single source for all device information; allows execution of scripts, macros and programs; or sends email/page on alarms.

EPICenter's client/server architecture provides ease of use and flexibility.

Customers can run Client in a web browser. They can scale EPICenter using distributed server support.

Voice-Class Availability

EPICenter's availability is greatly enhanced by granular health and status monitoring of the network. Firmware Management's automatic firmware version tracking indicates when there are newer versions and can automatically retrieve those versions from Extreme Networks. The Real-Time Statistics feature provides a graphical representation of utilization and error statistics for multiple ports on a device, device slot, or within a port group.

Comprehensive Security

EPICenter provides multiple features that control and monitor the security features on Extreme Networks' products. VLAN Manager creates and manages VLANs easily throughout the network. Policy Manager's access-based security policies enforce user-based security. Associated ACL rules are dynamically applied or removed in response to Network Login and 802.1x events. You may need to track down a specific host on your network due to some malicious activity. EPICenter provides an IP/MAC

Address Finder tool to locate any MAC address on your network. To protect the sensitive data from being intercepted or altered by unauthorized access, Secure Shell 2 (SSHv2) protocol and HTTPS protocols are provided. These protocols encrypt traffic between the switch management port and the EPICenter.

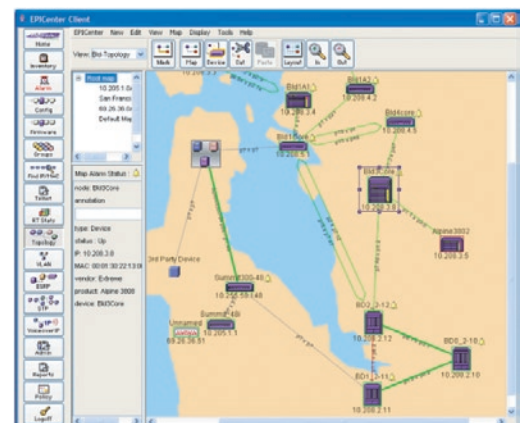
Service Extensibility

EPICenter integration with Avaya Integrated Management (AIM) software helped user to launch AIM console and Avaya Device Manager from within EPICenter. This integration also helps to discover devices managed by AIM from within EPICenter. Telnet macros allow execution on multiple devices in one operation, and can be executed repeatedly. Any device running a MIB-II compatible SNMP agent can be discovered by the EPICenter Inventory Manager. EPICenter's configurable functionality allows users to enable/disable features per applet basis. Abstract Type Library allows adding support for future hardware and software via Service Packs.

EPICenter 5.1 release supports LLDP for prompt discovery of Avaya and other devices.

Intuitive Interface and Design

Simplicity begins with a detailed real-time view of the entire network. EPICenter's topology applet allows a user to view a network of EPICenter-managed devices and the links between devices as a set of maps. These maps can be organized into sets of submaps that allow a network to be represented as a hierarchical system of campuses, buildings, floors, closets, or any logical groupings. Additional topology views can be created so that several different representations of a network are available for different purposes. The hierarchical views are fully customizable to effectively meet the business and network requirements of each organization.



EPICenter Features

Policy Manager

EPICenter Policy Manager is a functionality upgrade to EPICenter, adding fine grain control and monitoring of QoS, Access Control Lists (ACLs) and Network Login/802.1x based network access security monitoring.

Policy Manager also can apply user based dynamic policies based on Network Login authentication for intelligent network access. Based on user credentials and login, ACLs and QoS settings can be dynamically applied to an edge port. Policy Manager can interact with LDAP directories to obtain user information. Policy Manager also assists in defining QoS settings for your VoIP infrastructure.

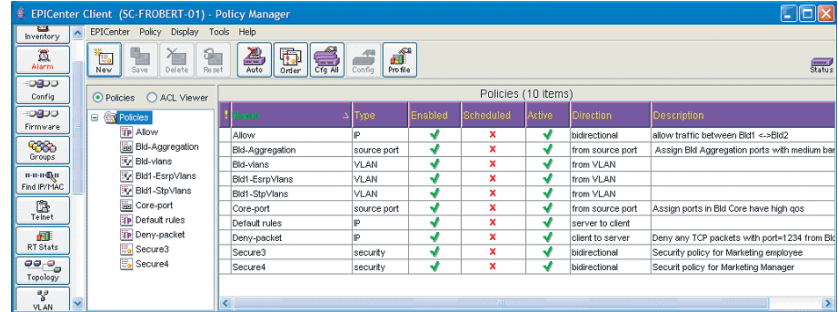


Figure 1: Policy Manager

Avaya Integration

EPICenter 5.1 provides an end-to-end converged management infrastructure. With EPICenter 5.1, Avaya Integrated Management and EPICenter co-exist and can be cross-launched from the same server. EPICenter can discover Avaya VoIP infrastructure, import network inventory and status monitoring from Avaya Integrated Management and can automatically forward traps to Avaya Integrated Management.

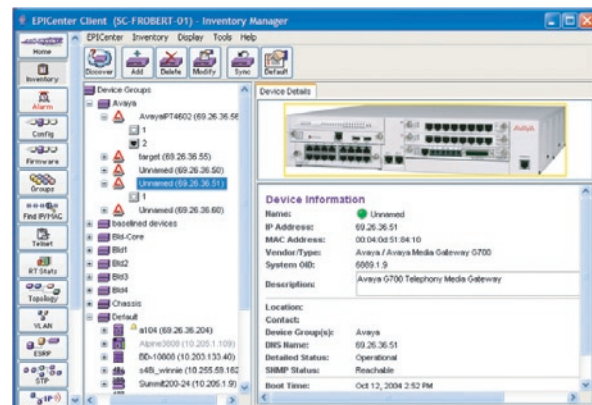


Figure 2: Device Status

EPICenter Asset Discoverer (EAD)

EAD is a free tool that allows customers to simply and easily install and run a tool to discover all Extreme Networks' switches in their network. After discovering and detailing several attributes (such as hardware serial number and software release level) a report is generated in CSV format. The user has the option to either save the report and send it or the user can choose EAD to send the report directly to Extreme Networks or to the partner for verification and update of the asset database. This helps ensure that Extreme Networks and its partners have the right products in the right locations to best support our customers.

EAD assists with entitlement alignment, product lifecycle management, software revision management and asset/inventory management. The report output will provide you with a device inventory of all networking devices (MIB II compliant devices).

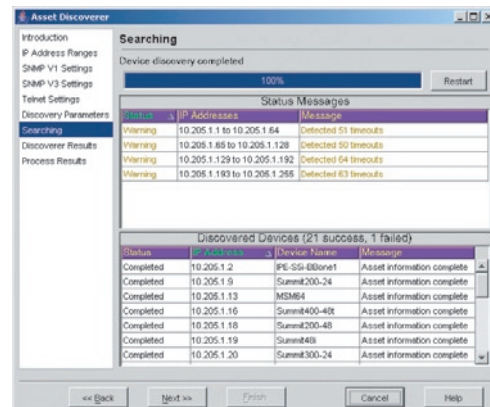


Figure 3: EPICenter Asset Discoverer

Technical Specifications

Switch	Extreme OS Requirements
Summit® series	ExtremeWare 6.2 or later
BlackDiamond® 6800 series	ExtremeWare 6.2 or later
Alpine® 3800 series	ExtremeWare 6.2 or later
BlackDiamond 10808	ExtremeWare XOS 11.0 or later
BlackDiamond 8800 series	ExtremeWare XOS 11.1 or later
Summit X450 series	ExtremeWare XOS 11.2 or later

Operating System Requirements	Memory and Other Requirements
Windows XP Professional SP1	256 MB RAM (1 GB recommended)
Windows 2000 SP4	400 MB disk space
Windows 2003 Server	1 GHz Pentium-compatible processor
Solaris 2.8 or 2.9	256 MB RAM (512 MB or higher recommended) 600 MB disk space Ultra 5 or higher processor

Client Requirements	Browser Requirements
Windows XP Professional SP1, Windows 2000 SP4, Windows 2003 Server	Internet Explorer 6.0. The Java 1.4.2_05 plug-in is required. This plug-in is included on the EPICenter client start-up page
Solaris 2.8 or 2.9	Only standalone client is supported Netscape Navigator™ / Communicator™ 4.72 or later is required for reports

Ordering Information

Part Number	Name	Description
81511	EPICenter 5.1	EPICenter is a configurable network management suite for status monitoring, configuration and troubleshooting of networks based on Extreme Networks switches. Supports secure communication via SNMPv3 and SSH-2. Manages up to 250 network devices
81512	EPICenter 5.1 Gold Upgrade	EPICenter Gold Upgrade is a scalability upgrade to the EPICenter software suite via license key to enable the distributed server in EPICenter and management of up to 2000 network devices. Requires EPICenter 5.1.
81514	EPICenter 5.1 Policy Manager	EPICenter Policy Manager Upgrade is a functionality upgrade to the EPICenter software suite via license key to enable enforcement of security and QoS/ACL policies as well as VoIP QoS configuration assistance. Requires EPICenter 5.1.

Note: EPICenter and its Gold and Policy Manager Upgrade licenses are licensed per major release. Extreme Networks' EPICenter Software program allows customers to always stay current with the latest major release.

For the latest EPICenter product specifications, Service Packs and evaluation software/licenses, please visit <http://www.extremenetworks.com/libraries/prodpdfs/products/epicenter.asp>



www.extremenetworks.com

email: info@extremenetworks.com

Corporate Headquarters and North America

Extreme Networks, Inc.
3585 Monroe Street,
Santa Clara, CA 95051 USA
Phone +1 408 579 2800

Europe, Middle East, Africa and South America

Phone +31 30 800 5100

Asia Pacific

Phone +852 2517 1123

Japan

Phone +81 3 5842 4011

© 2005 Extreme Networks, Inc. All rights reserved.

Extreme Networks, the Extreme Networks Logo, Alpine, BlackDiamond, EPICenter, ExtremeWare, ExtremeWare XOS, and Summit are either registered trademarks or trademarks of Extreme Networks, Inc. in the United States and/or other countries. All other trademarks are the trademarks of their respective owners.

Specifications are subject to change without notice.